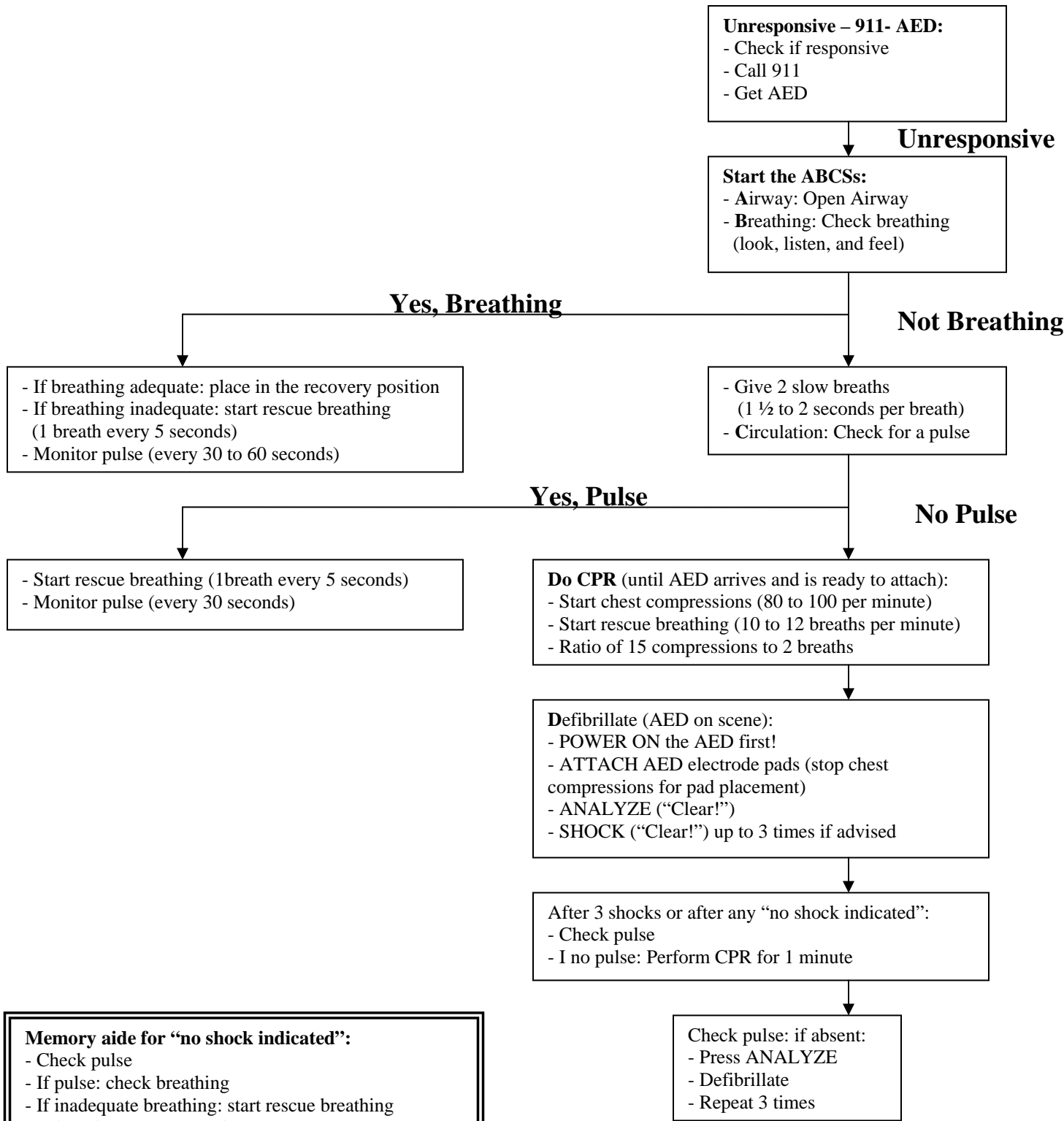


PLYMOUTH COMMUNITY SCHOOL CORPORATION

HEARTSAVER AED RESCUER TREATMENT ALGORITHM

Emergency Cardiac Care Pending Arrival of Emergency Medical Personnel



Memory aide for “no shock indicated”:

- Check pulse
- If pulse: check breathing
- If inadequate breathing: start rescue breathing (1 breath every 5 seconds)
- If adequate breathing: place in the recovery position
- If no pulse, analyze rhythm: repeat “shock indicated” or “no shock indicated” sequences